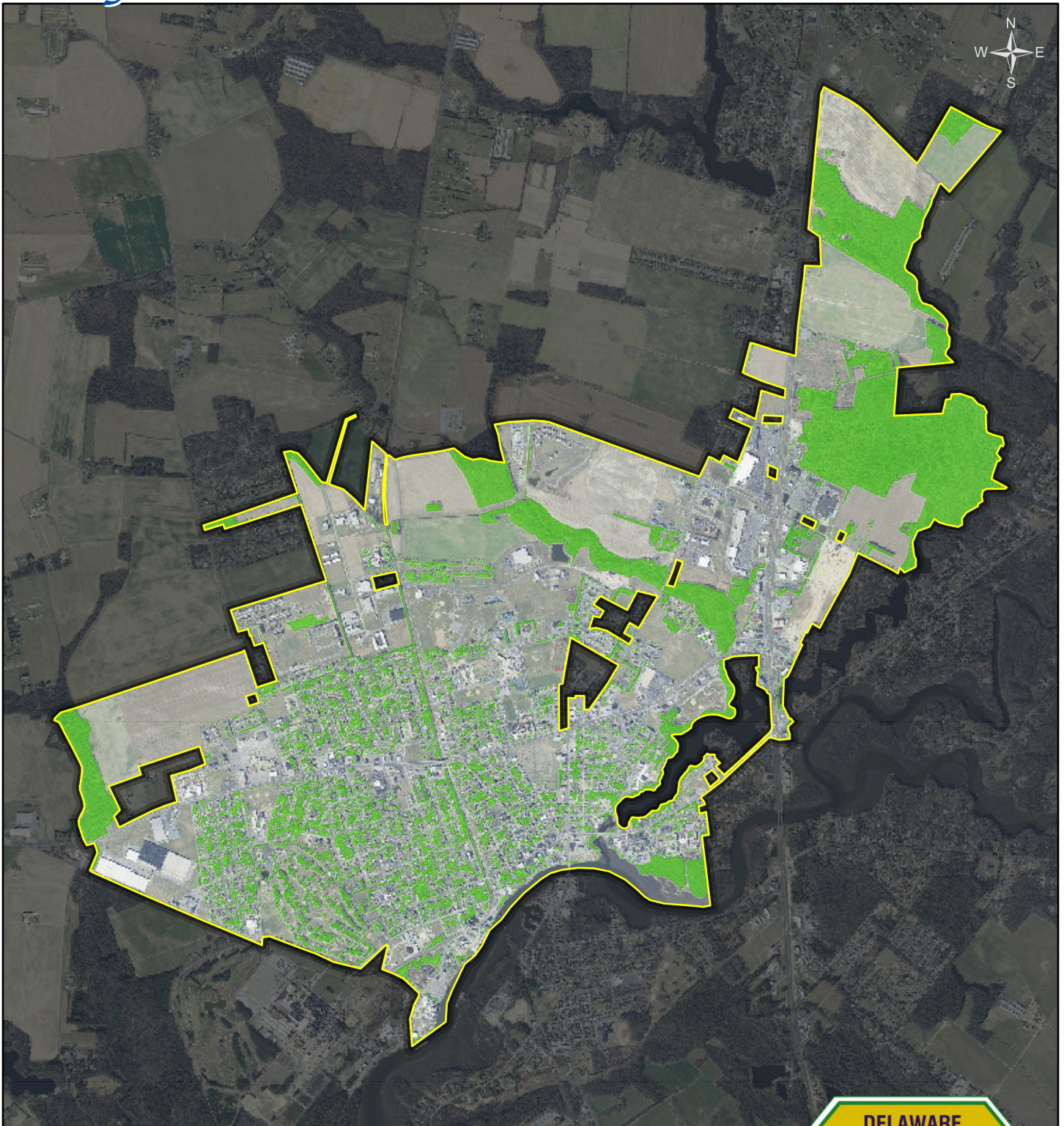


Seaford, DE

Urban Tree Canopy



Created: 2/24/2017 by J Kroon, DE Dept of Agriculture
Data Credits: University of Vermont Spatial Analysis Lab (*Tree Canopy Data*), State of Delaware

2014 Urban Tree Canopy: 24.6% (789 Acres)

Total Incorporated Land (excluding open water): 3211.5 Acres



0 0.375 0.75 1.5 Miles