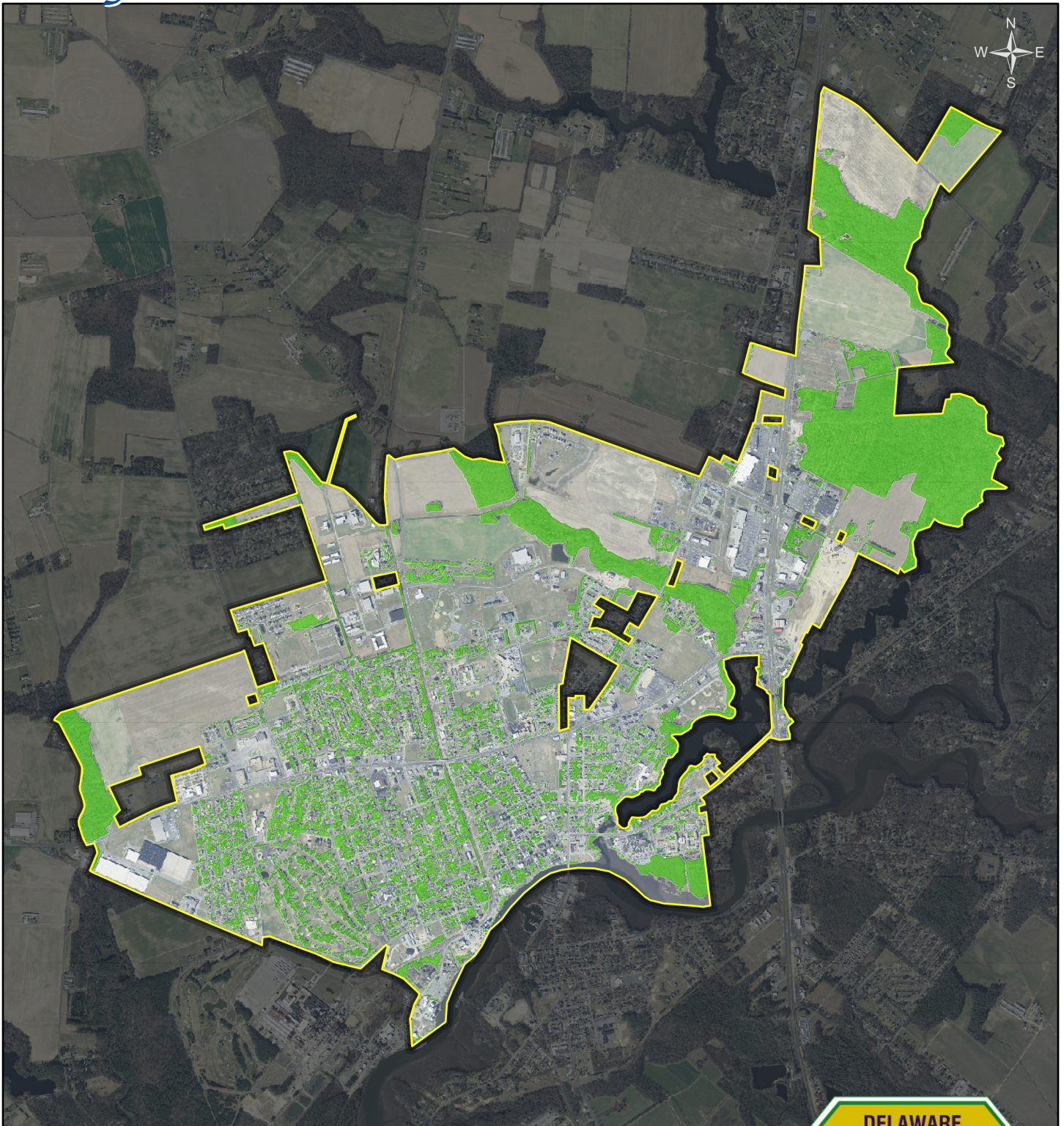


# Seaford, DE

## Urban Tree Canopy



Created: 1/26/2017 by J Kroon, DE Dept of Agriculture  
Data Credits: University of Vermont Spatial Analysis Lab (*Tree Canopy Data*), State of Delaware

**2014 Urban Tree Canopy: 24.6%** (785.69 Acres)

Total Incorporated Land (excluding open water): 3197.34 Acres

