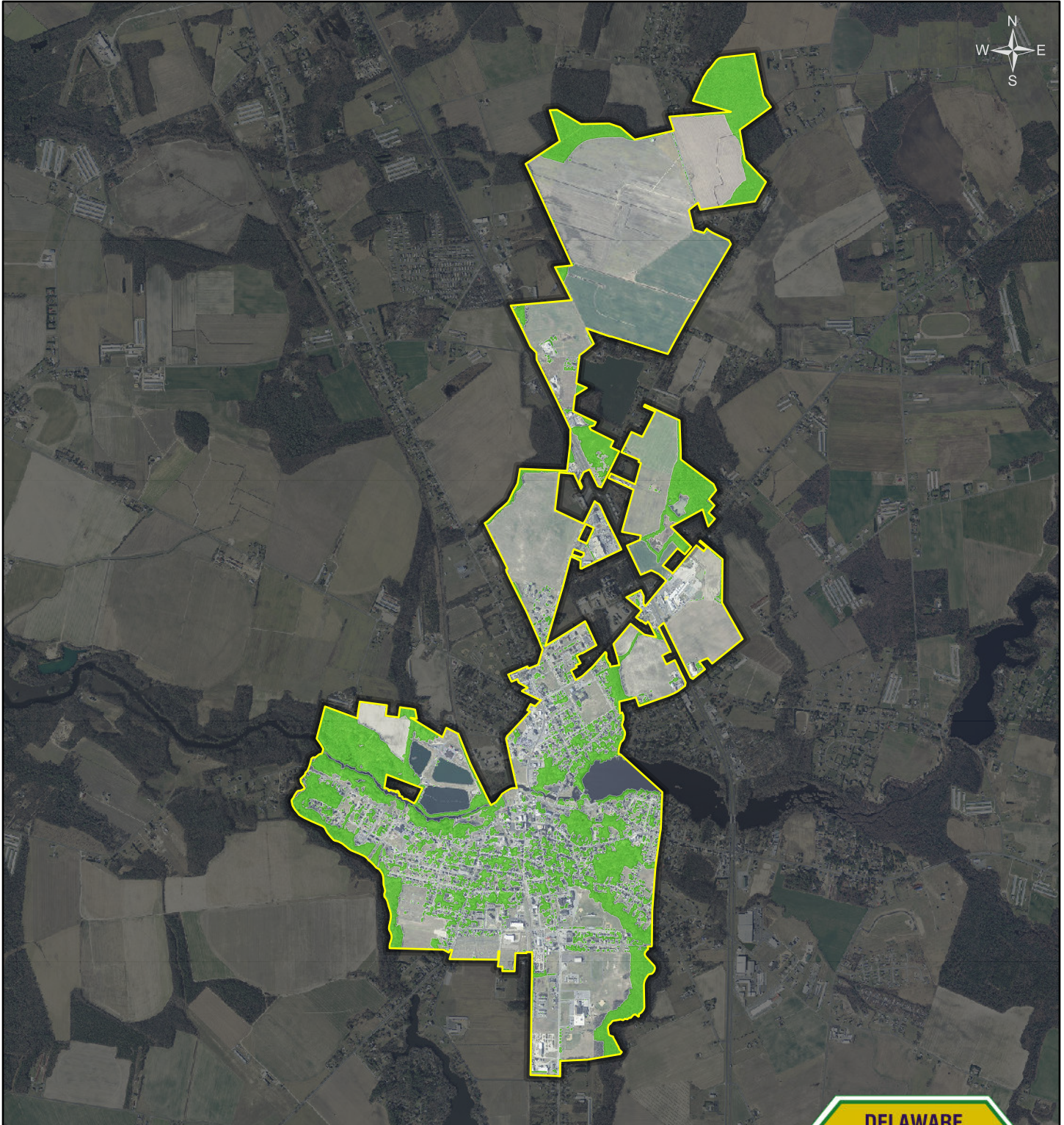


Laurel, DE

Urban Tree Canopy



Created: 1/26/2017 by J Kroon, DE Dept of Agriculture

Data Credits: University of Vermont Spatial Analysis Lab (*Tree Canopy Data*), State of Delaware

2014 Urban Tree Canopy: 26% (446.77 Acres)

Total Incorporated Land (excluding open water): 1719.22 Acres

