

# 2018 K-5 Arbor Day Poster Contest

## Trees are Terrific...and Perfect for Pollinators!



The Delaware Forest Service invites all public and private schools, grades K-5 to participate in the 2018 Arbor Day Poster Contest and Annual Free Seedling Giveaway.

The annual Arbor Day Poster Contest is designed to increase knowledge about forests and forest resources. The poster contest is a way for your students to learn more about the role of trees in our communities and their direct impact on Delawareans' health and well-being. Your schoolyard is a perfect setting to incorporate the role of community trees into your everyday curriculum. These trees not only provide beauty, they shade our streets and schoolyards and create valuable habitat and food for wildlife.

This year's theme, "**Trees are Terrific...and Perfect for Pollinators!**" is intended to increase knowledge about the importance of trees and woody shrubs for many of our pollinators. Honey bees are getting a lot of attention right now (and rightfully so) but did you know pollinators also include native bees, butterflies, moths, wasps, flies, beetles and some birds and mammals! Pollinators are vitally important to humans and wildlife. It has been calculated that one out of every three to four mouthfuls of food we eat and beverages we drink is delivered to us by pollinators. Not only do pollinators provide us with a significant amount of the food we eat and contribute to the economy, they also preform key roles in natural ecosystems. By helping to keep plant communities healthy and maintaining their ability to reproduce naturally, native pollinators assist plants in providing food and cover for wildlife, preventing erosion and keeping waterways clean. Go Pollinators!!!

A diversity of healthy trees is more imperative for pollinators than most people realize and they actually support an even greater diversity of butterflies and moths than non-woody plants! Pollinators need a diverse mix of blooming flowers all through the growing season for forage (April-October).

Native tree and shrub species provide some of the first food sources for pollinators in the spring, whether it's the pollen and nectar from the flowers or the leaves for butterfly and moth caterpillars. Trees are especially beneficial because the density of their blossoms help pollinators forage more efficiently. The leaves and woody material provide nesting sites, shelter from the elements and predators, and protection throughout winter. Leaves, twigs and branches provide perching sites on which pollinators can feed, sun, and rest.



Doug Tallamy, an entomologist and professor at the University of Delaware compiled tables ranking native plants (both woody and non-woody) in terms of the number of butterfly and moth species recorded using them as host plants. The top ranked woody species are the Oaks, supporting 534 different species of butterfly and moth caterpillars. In comparison, the top ranked non-woody plant is Goldenrod which supports 114 species. Tallamy’s table included here lists 21 trees species supporting more butterflies and moths than Goldenrod. So if you want more pollinators, plant trees!

This year’s Arbor Day Poster theme, **“Trees are Terrific...and Perfect for Pollinators!”** is intended to increase awareness of the plight of our pollinators all while learning about trees. The Delaware Department of Agriculture is dedicated to the national effort of protecting and enhancing population of pollinators and in 2016 released the Delaware Managed Pollinator Protection Plan. The plan includes strategies to increase the quality and quantity of pollinator forage on public and private lands. Delaware’s Managed Pollinator Protection Plan can be viewed in Folder 2 on the google drive and accessed with this link: <https://goo.gl/DcmMnj>

Woody Plants		
Common Name	Plant Genus	Butterfly/moth species supported
Oak	Quercus	534
Black cherry	Prunus	456
Willow	Salix	455
Birch	Betula	413
Poplar	Populus	368
Crabapple	Malus	311
Blueberry	Vaccinium	288
Maple	Acer	285
Elm	Ulmus	213
Pine	Pinus	203
Hickory	Carya	200
Hawthorn	Crataegus	159
Spruce	Picea	156
Alder	Alnus	156
Basswood	Tilia	150
Ash	Fraxinus	150
Rose	Rosa	139
Filbert	Corylus	131
Walnut	Juglans	130
Beech	Fagus	126
Chestnut	Castanea	125

Tons of online resources to enhance this year’s Arbor Day Poster theme and ideas on how to take the lesson beyond the classroom are available by accessing the Forest Service Programs Google Drive. The resources are intended to introduce the concept of pollinators and the role of trees in their survival.

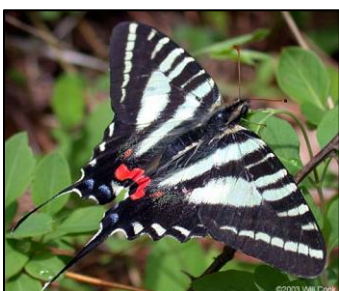
Google Drive Link: <https://goo.gl/DcmMnj>. Double Click on “2018 Arbor Day Poster Contest Resources” folder.

- Folder 1. Intro and Rules
- Folder 2. Pollinator and Tree Resources
- Folder 3: Classroom Resources

Poster contest information can also be found here: <http://delawaretrees.com/arbor-day/arbor-day-poster-contest/>

**You must register your class to participate in the contest and to receive free tree seedlings:**  
<https://2018arbordaypostercontest.eventbrite.com>

Deadline to register: **March 15, 2018**  
 Deadline to submit posters: **March 29, 2018**



Many caterpillars of butterflies and moths are “host specific” meaning they can only feed on one or more closely related groups of plants. Pictured here is the zebra swallowtail whose caterpillar can only eat the leaves of the pawpaw tree. To attract the adult of this species, plant pawpaw trees!